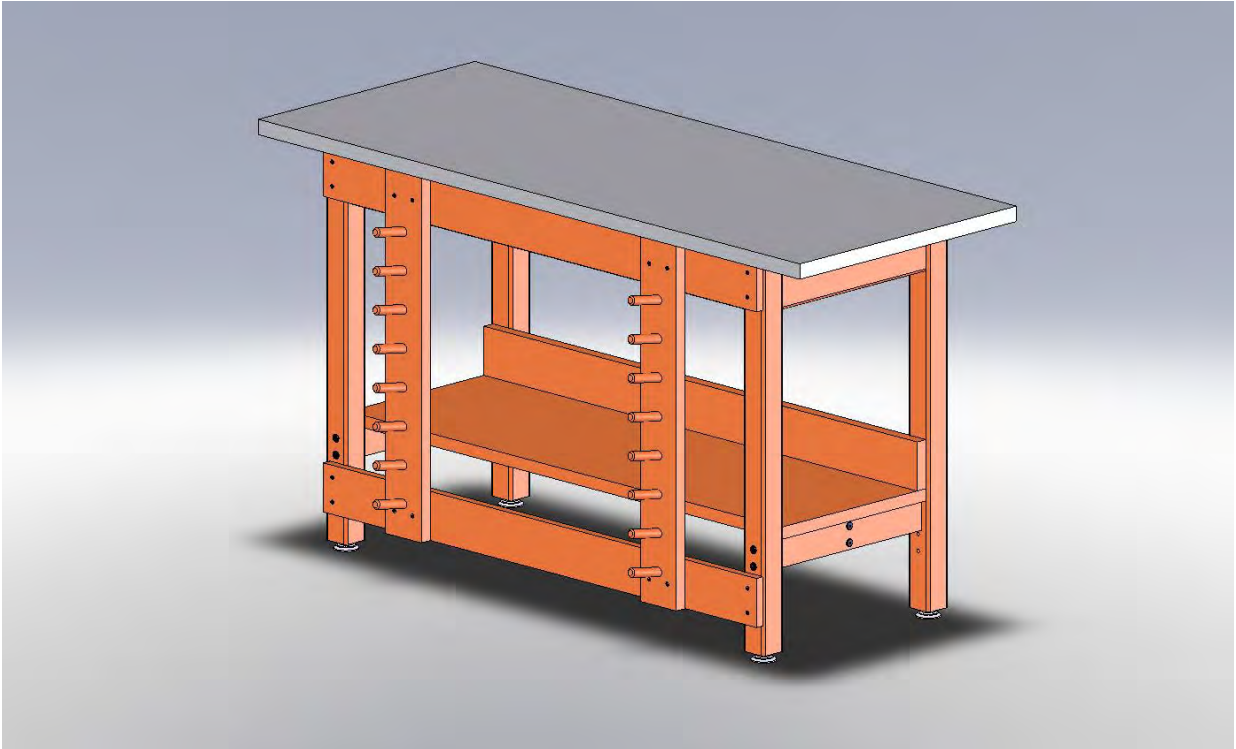




ASSEMBLY INSTRUCTIONS

GSB-6024 WORKBENCH ASSEMBLY INSTRUCTIONS



***Model views may not represent exact model purchased**

TABLE OF CONTENTS

ASSEMBLY COMPONENTS	3
APRON TO LEG ATTACHMENT	4
LEG ASSEMBLY	5
LEG BRACES & STRETCHERS	5
SHELF & CLAMP FRAME	6

ASSEMBLY COMPONENTS

ITEMS INCLUDED	PART #		PART#
1-LEG KIT, TABLE	L3035MP-LB	1-APRON ASSY, TABLE	235634MP
1-TOP, TABLE	17-0017	HARDWARE BOX	
4-SCREW, 7MMX50MM,	228564	8-SCREW, 7MMX90MM	227578
23- SCREWS, #8.00X1.5 FSQ	100066	1-SHELF	235384-4800
1-STRETCHER	S7000-4550MP	2-BRACES	LS7000-16MP
		1-CLAMP FRAME	235641MP

REV	DESCRIPTION	DATE	
---	Original Created	3-29-11	NAM

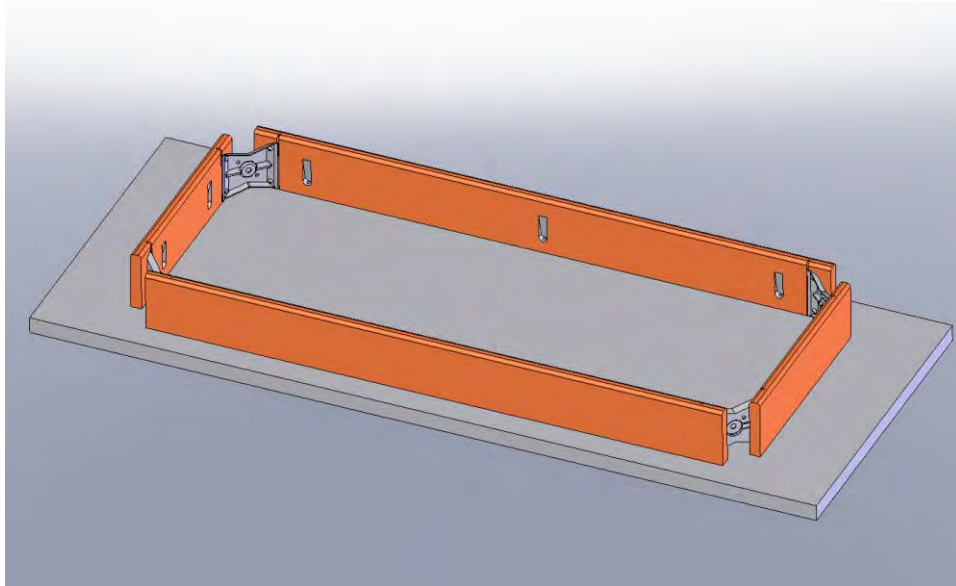
Assembly Instructions

Items not included but needed for assembly:

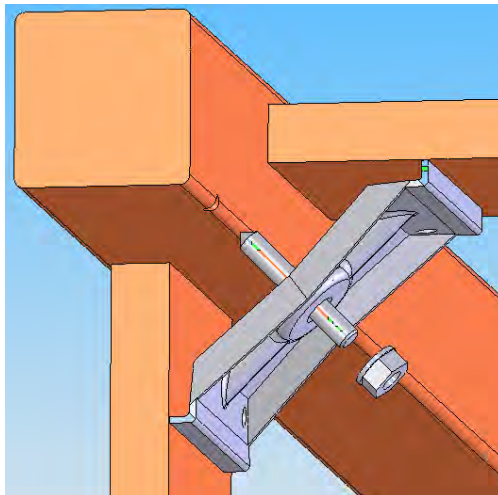
1. ½" wrench
2. #2 Phillips bit

Instructions:

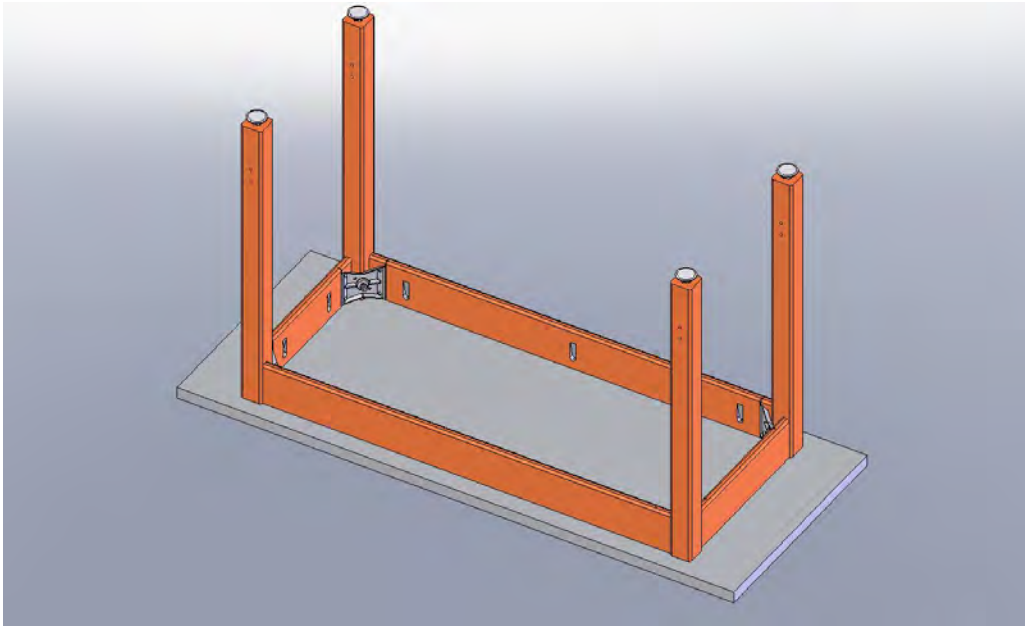
1. Lay the table on the floor with the apron side up. (Be sure to lay the table on a clean surface so you don't damage the tabletop.)



2. Take each of the table legs and insert the stud bolt through the hole in the steel corner brace.

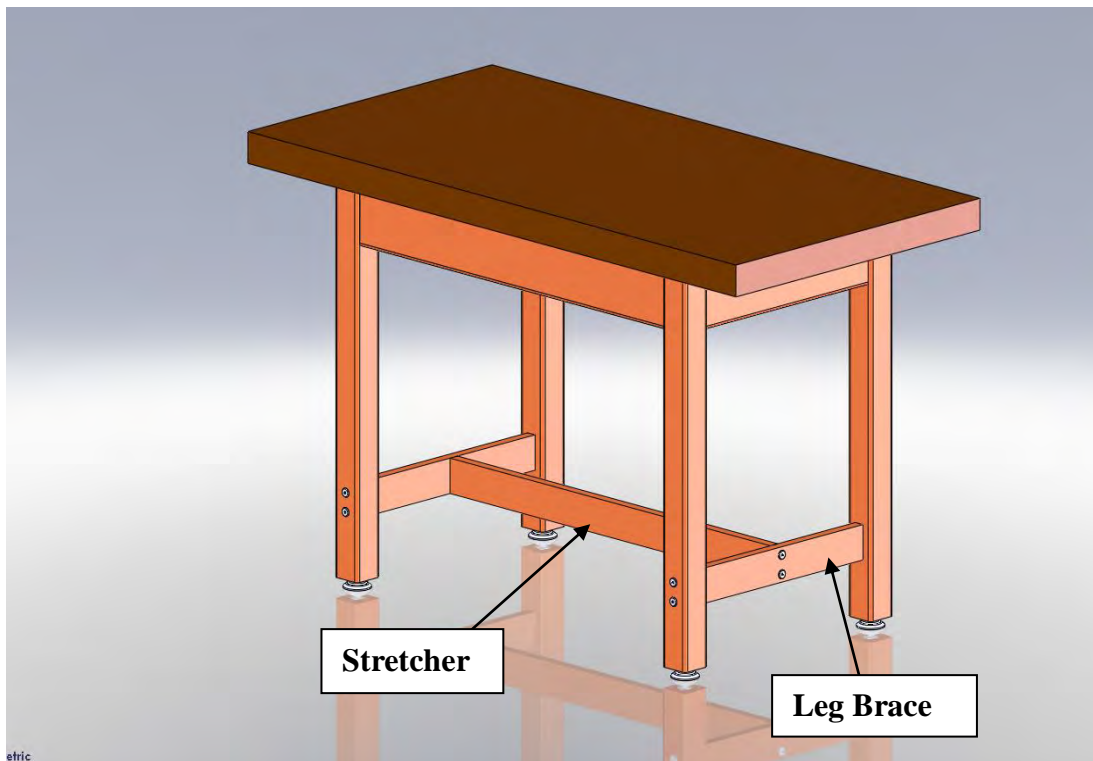


3. Apply a lock washer and a 5/16" nut onto each stud bolt. Tighten each nut using a minimum of 12 foot-pounds but not exceeding 17 foot-pounds of torque.



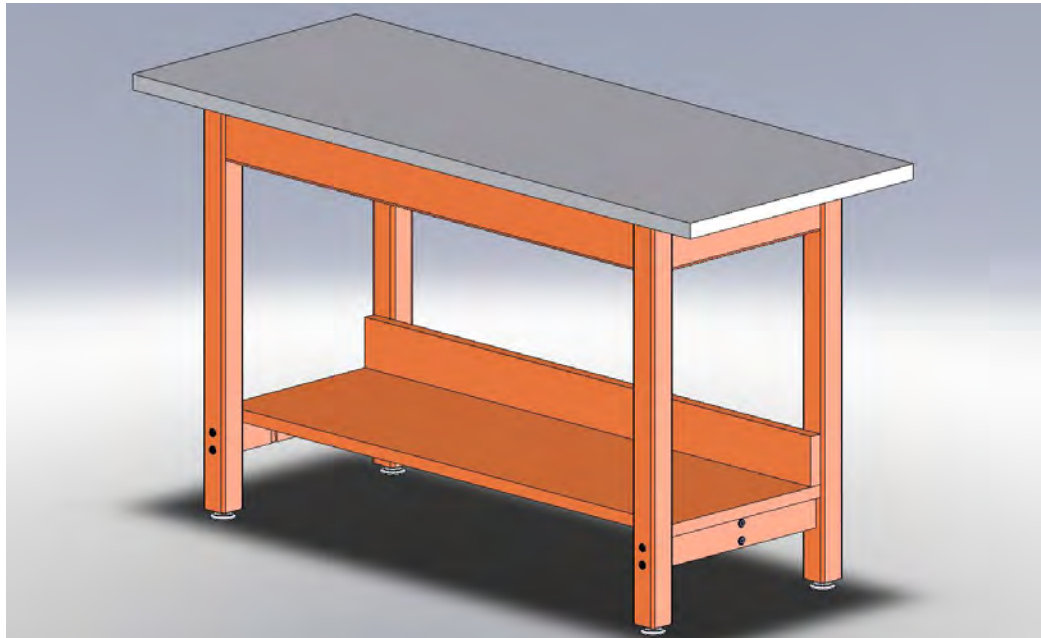
4. **NOTE: TABLES WITH LEG BRACES AND STRETCHERS SEE FIGURE 8A.**

FIGURE 8A

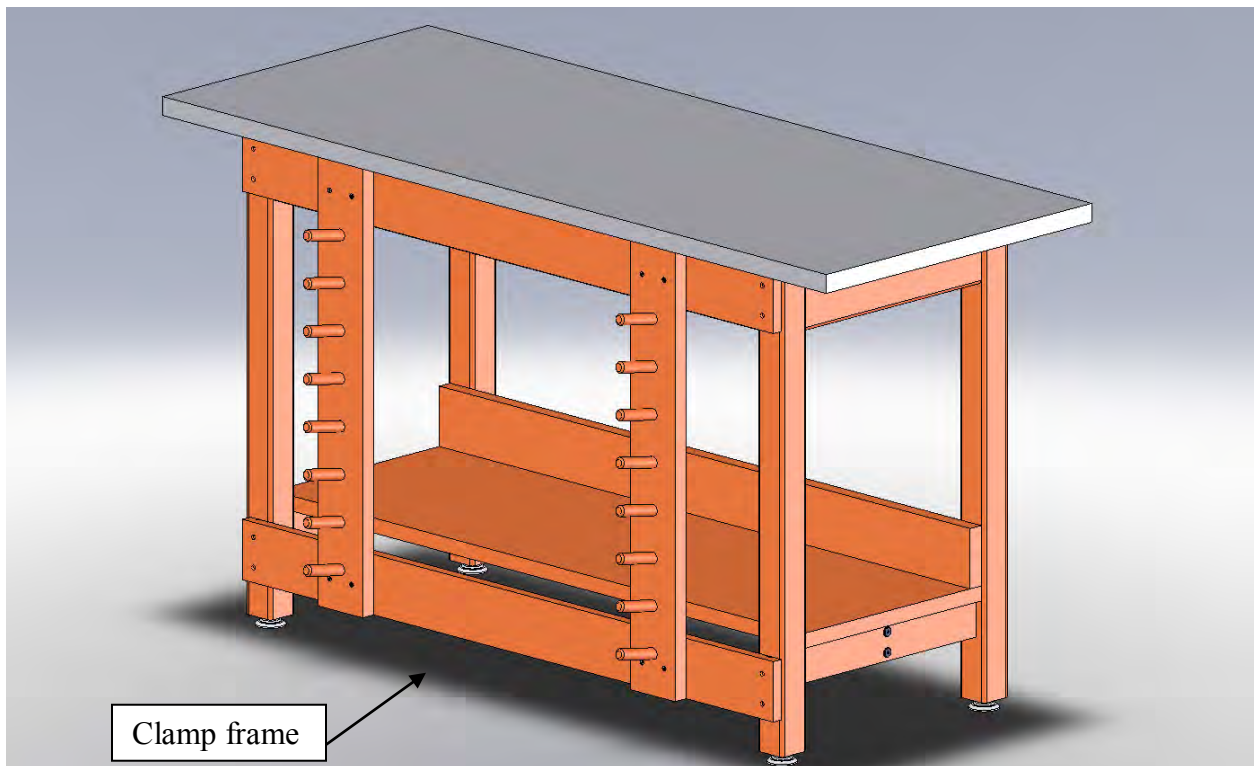


5. Attach leg braces with: (SCREW,7MMX90MM,CONN,ALLENHEAD,BLACK)
Provided

6. Attach stretcher with: (SCREW,7MMX50MM,CONN,ALLENHEAD,BLACK)
Provided



7. Attach shelf using 7- SCREWS,#8.00X1.5 FSQ SMS TYPE 17 (100066)



8. Attach clamp frame to front of table using 8 - SCREWS,#8.00X1.5 FSQ SMS
TYPE 17 (100066)
9. Turn the table over so the top is up. Set your table in place and adjust the leg
levelers to level the table.

