



ASSEMBLY INSTRUCTIONS

PDC-2436 MOBILE CART ASSEMBLY INSTRUCTIONS



***Model views may not represent exact model purchased**

TABLE OF CONTENTS

ASSEMBLY COMPONENTS	3
APRON TO LEG ATTACHMENT	4
LEG ASSEMBLY	5
LEG BRACES & STRETCHERS	6

ASSEMBLY COMPONENTS

ITEMS INCLUDED	PART #		PART#
1-LEG KIT, TABLE		1-APRON ASSY, TABLE	
1-TOP, TABLE		BOX, TABLES	
-SCREW, #12.00X1 1/2	100062	8-SCREW, 7MMX90MM	227578
		OPTION FOR LEG BRACES	
4-SCREW, 7MMX50MM,	228564		
OPTION FOR STRETCHERS			

REV	DESCRIPTION	DATE	
---	Original Created	6-19-09	NAM

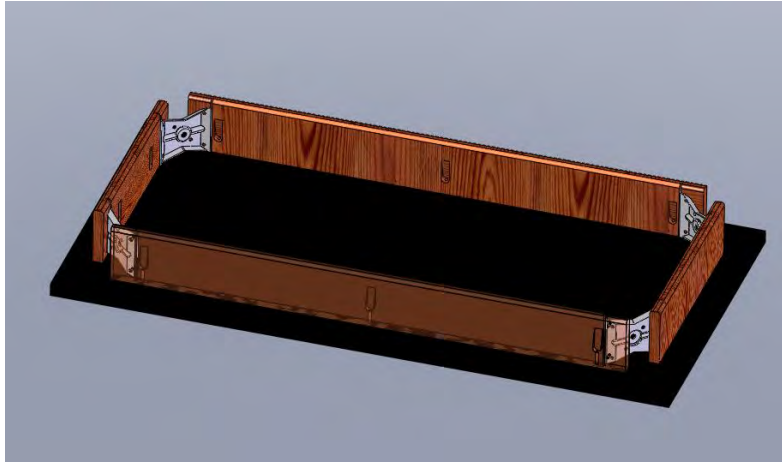
Assembly Instructions for Tables

Items not included but needed for assembly:

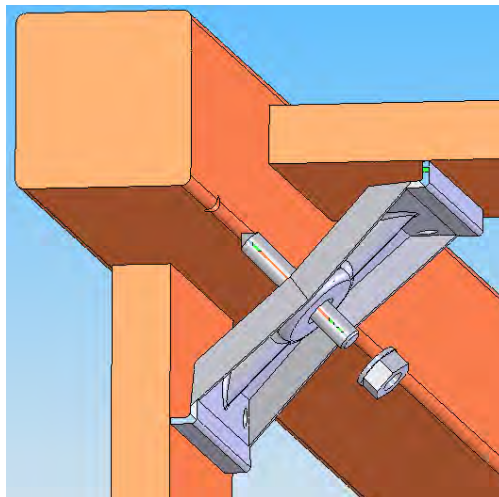
1. ½" wrench

Instructions:

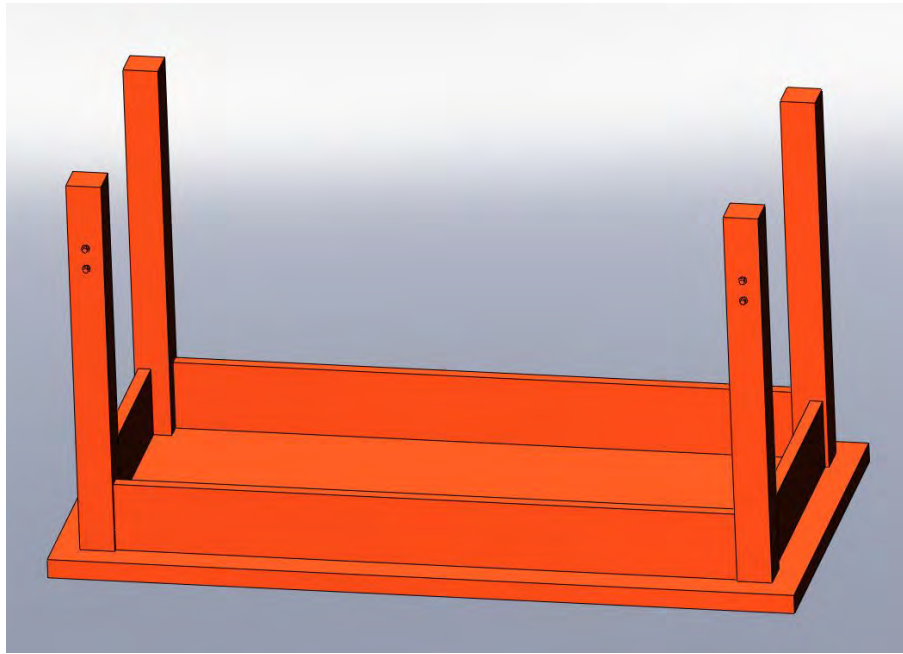
1. Lay the table on the floor with the apron side up. (Be sure to lay the table on a clean surface so you don't damage the tabletop.)



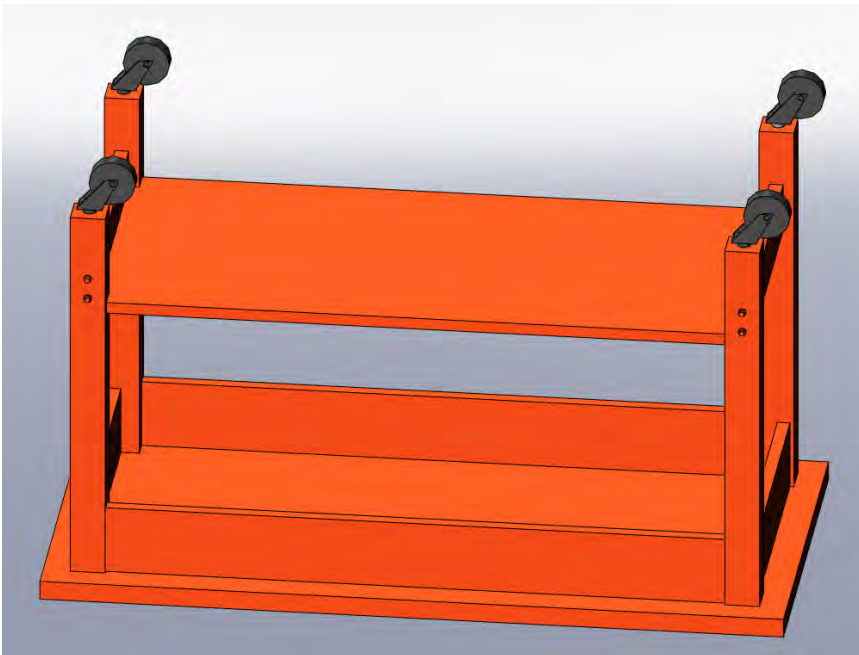
2. Take each of the table legs and insert the stud bolt through the hole in the steel corner brace.



3. Apply a lock washer and a 5/16" nut onto each stud bolt. Tighten each nut using a minimum of 12 foot-pounds but not exceeding 17 foot-pounds of torque.



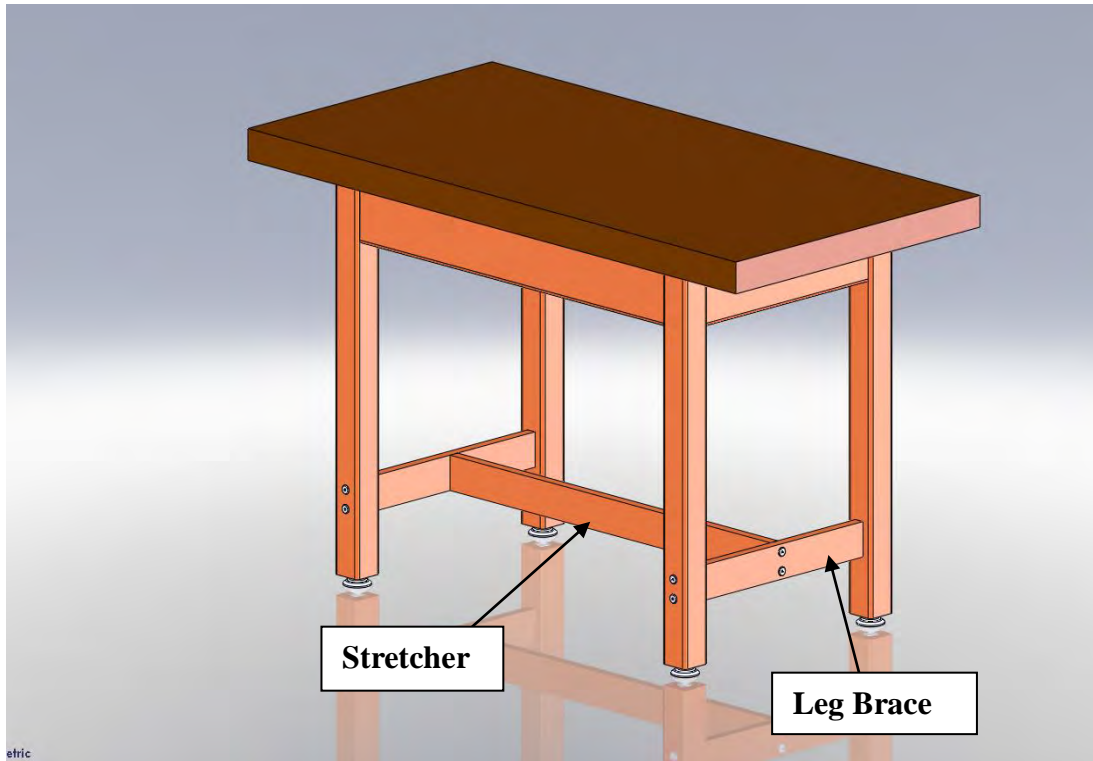
4. Bolt the casters to the bottom of the legs.



5. Turn the table over so the top is up. Set your table in place .

6. **NOTE: TABLES WITH LEG BRACES AND STRETCHERS SEE FIGURE 8A.**

FIGURE 8A



7. Attach leg braces with: (SCREW,7MMX90MM,CONN,ALLENHEAD,BLACK)
Provided
8. Attach stretcher with: (SCREW,7MMX50MM,CONN,ALLENHEAD,BLACK)
Provided