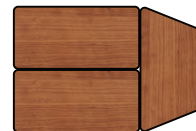
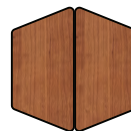
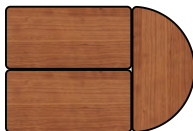
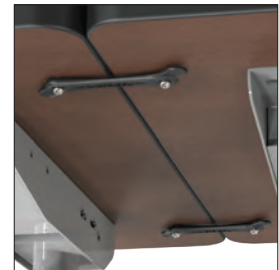


# Modular Conference Tables

Conference & Training Tables





## Modular Conference Tables

- Modular Conference tables are available in three shapes for multiple arrangement options, making them ideal for any meeting or conference environment.
- Each features a 1.13" thick HPL top available in eight Q5 laminate colors for shipping within five days, or can be customized with any Wilsonart® HPL and edgeband. Visit [www.moorecoinc.com/custom](http://www.moorecoinc.com/custom) for more information.
- Black powder-coated steel legs include 4" casters (two locking). Tested to support up to 300 lbs.
- TAA compliant. Has achieved GREENGUARD GOLD Certification.
- Optional ganging device allows you to join your table configurations with ease.

Q5 laminate options:

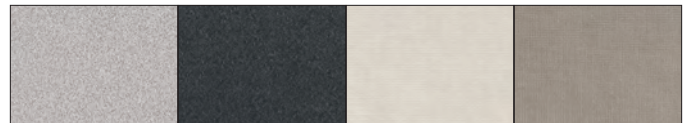


**7919** - Amber  
Cherry

**7209** - Nepal Teak

**7928** - Castle Oak

**7909** - Fusion  
Maple



**4622** - Gray Nebula

**4623** - Graphite  
Nebula

**4877** - Gray Mesh

**4878** - Pewter  
Mesh

Key	Part No.	Description	Product Dimensions	Ship Wt.
<b>Modular Conference Tables</b>				
<b>A</b>	27742-XXXX-XX	Rectangle	29.5"H x 58"W x 29"D	85 lbs
<b>B</b>	27743-XXXX-XX	Half Round	29.5"H x 58"W x 29"D	70 lbs
<b>C</b>	27744-XXXX-XX	Trapezoid	29.5"H x 58"W x 29"D	70 lbs
<b>Optional Accessories</b>				
<b>D</b>	66640*	Ganging Device	1.63"H x 4.5"W x .25"D	2 lbs

Shipping weights are listed on a per item basis and may vary based on quantities ordered.

■ Q1 ■ Q2 ■ Q5 ■ C10 ■ C15 ■ C20



Balt® & Best-Rite® are brand divisions of MooreCo, Inc.

2885 Lorraine Ave | Temple, TX 76501  
p: 800.749.2258 | f: 800.697.6258

[www.moorecoinc.com](http://www.moorecoinc.com)